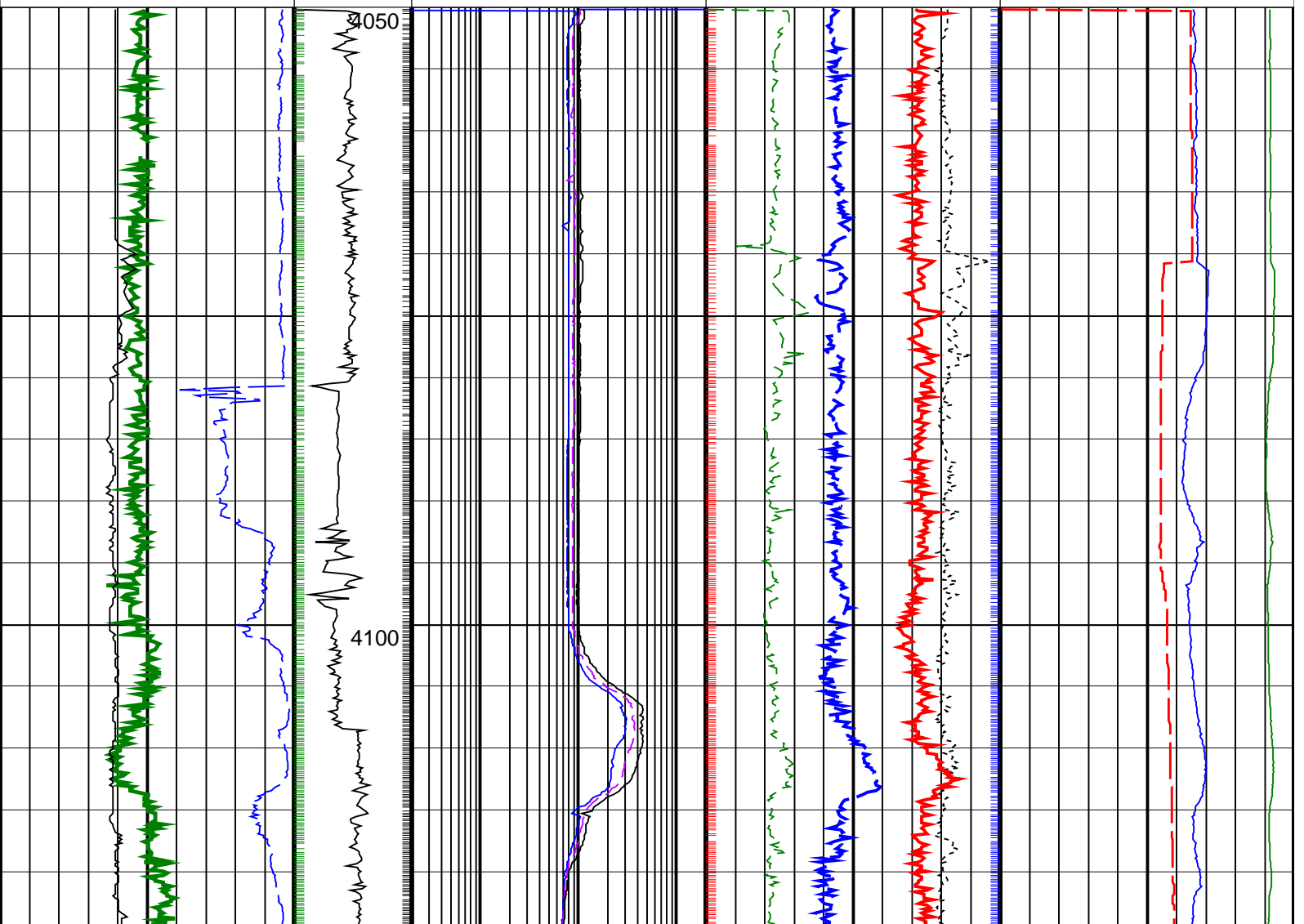
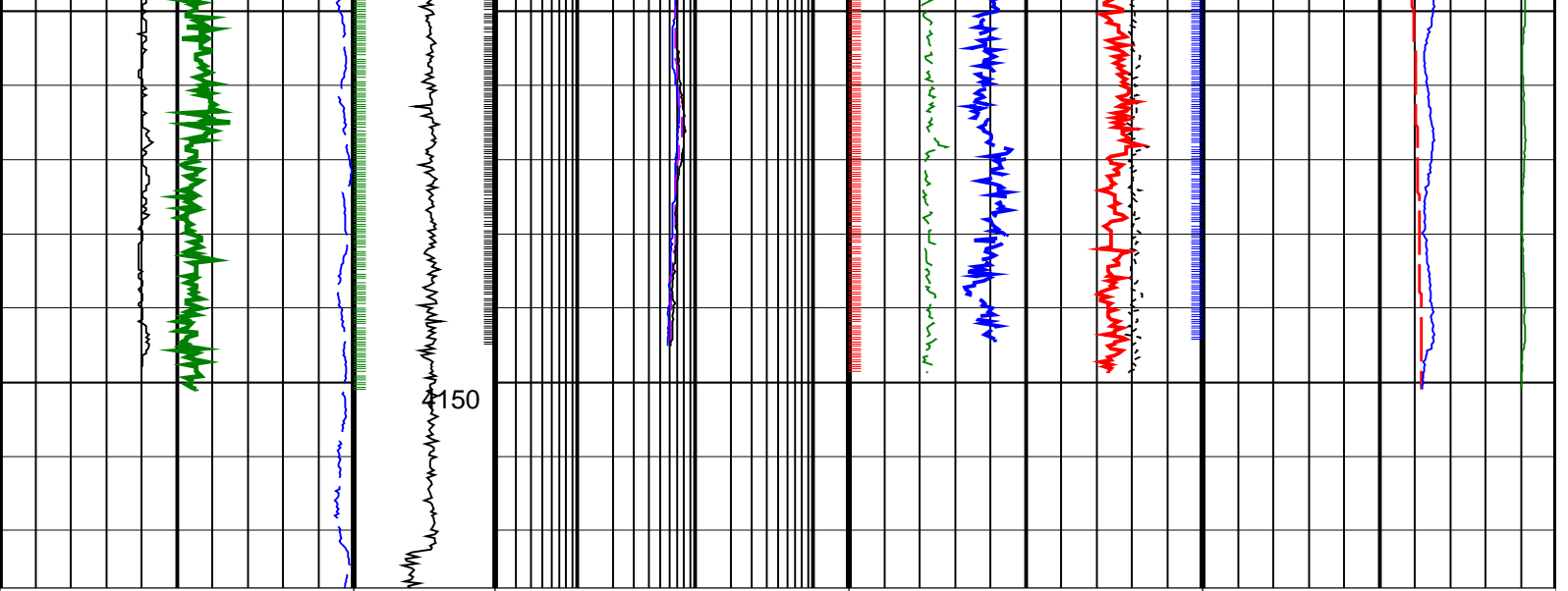


PIP SUMMARY

- └ Density Samples ─
- └ Gamma Ray Samples
- └ Resistivity Samples
- Neutron Samples ─

<p>Gamma Ray, Average, Real-Time, Computed Downhole (GRMA_DH_ECO_RT) 0 (GAPI) 200</p>		<p>ARC Phase Shift Resistivity 40 inch at 2 MHz, Real-Time (P40H_ECO_RT) 0.2 (OHMM) 200</p>	<p>Thermal Neutron Porosity, Average, Real-Time (TNPH_ECO_RT) 45 (PU) -15 10</p>	<p>Equivalent Circulating Density, Real-Time (ECD_ECO_RT) 0 (LB/G) 15</p>
<p>Ultrasonic Caliper, Average Diameter, Real-Time, Computed Downhole (UCAV_DH_ECO_RT) 6 (IN) 16</p>		<p>ARC Phase Shift Resistivity 28 inch at 2 MHz, Real-Time (P28H_ECO_RT) 0.2 (OHMM) 200</p>	<p>Photoelectric Factor, Bottom, Real-Time, Computed Downhole (PEB_DH_ECO_RT) 0 (---- 10)</p> <p>Bulk Density Correction, Bottom, Real-Time Computed Downhole (DRHB_DH_ECO_RT) (G/C3) -0.25 0.25</p>	<p>Downhole Annulus Pressure, Real Time, Computed Downhole (DHAP_DH_ECO_RT) 0 (PSI) 6000</p>
<p>ROP*5 (ROP5) 200 (M/HR) 0</p>	<p>MWD Collar RPM (CRPM_RT) (RPM) 0 400</p>	<p>ARC Phase Shift Resistivity 16 inch at 2 MHz, Real-Time (P16H_ECO_RT) 0.2 (OHMM) 200</p>	<p>Bulk Density, Bottom, Real-Time, Computed Downhole (ROBB_DH_ECO_RT) 1.85 (G/C3) 2.85</p>	<p>Downhole Annulus Temperature, Real Time, Computed Downhole (DHAT_DH_ECO_RT) 0 (DEGC) 200</p>





<p>ROP*5 (ROP5) (M/HR)</p> <p>0 200</p>	<p>MWD Collar RPM (CRPM_RT) (RPM)</p> <p>0 400</p>	<p>ARC Phase Shift Resistivity 16 inch at 2 MHz, Real-Time (P16H_ECO_RT)</p> <p>0.2 (OHMM) 200</p>	<p>Bulk Density, Bottom, Real-Time, Computed Downhole (ROBB_DH_ECO_ RT)</p> <p>1.85 (G/C3) 2.85</p>	<p>Downhole Annulus Temperature, Real Time, Computed Downhole (DHAT_ DH_ECO_RT)</p> <p>0 (DEGC) 200</p>	
<p>Utrasonic Caliper, Average Diameter, Real-Time, Computed Downhole (UCAV_ DH_ECO_RT)</p> <p>6 (IN) 16</p>		<p>ARC Phase Shift Resistivity 28 inch at 2 MHz, Real-Time (P28H_ECO_RT)</p> <p>0.2 (OHMM) 200</p>	<p>Photoelectric Factor, Bottom, Real-Time, Computed Downhole (PEB_DH_ ECO_RT)</p> <p>0 (G/C3) 10</p>	<p>Bulk Density Correction, Bottom, Real-Time Computed Downhole (DRHB_DH_ ECO_RT)</p> <p>-0.25 (G/C3) 0.25</p>	<p>Downhole Annulus Pressure, Real Time, Computed Downhole (DHAP_DH_ECO_ RT)</p> <p>0 (PSI) 6000</p>
<p>Gamma Ray, Average, Real-Time, Computed Downhole (GRMA_DH_ECO_ RT)</p> <p>0 (GAPI) 200</p>		<p>ARC Phase Shift Resistivity 40 inch at 2 MHz, Real-Time (P40H_ECO_RT)</p> <p>0.2 (OHMM) 200</p>	<p>Thermal Neutron Porosity, Average, Real-Time (TNPH_ ECO_RT)</p> <p>45 (PU) -15</p>	<p>Equivalent Circulating Density, Real-Time (ECD_ ECO_RT)</p> <p>10 (LB/G) 15</p>	

PIP SUMMARY

- ┆ Density Samples ┆
- ┆ Gamma Ray Samples
- ┆ Resistivity Samples
- Neutron Samples ┆

IDEAL Version: ID11_OC_01
IDEAL